



LIVEIN
RESIDENCE


LIVEIN
PROPERTIES



CRAFTED WITH AN EYE FOR STYLE

With its distinctive touches of old Cyprus, The Livein Residence is a truly magnificent property that displays all the style and charm of the good life on this idyllic Mediterranean island. Comprising two storeys of flexible multi-room accommodation, the house makes a bold statement about whoever lives within the stone facade and sculptured gardens. An architectural masterpiece, Livein Residence will perfectly suit those who seek an elegant lifestyle in a quiet secluded location close to the city.

MORE THAN A TOUCH OF LIMASSOL CHARM

This stand-alone, ultra-modern, contemporary masterpiece nestled in Limassol's vibrant coastal fringes, will captivate the hearts and minds of discerning buyers. A testament to architectural excellence and luxurious living, The Residence redefines elegance and comfort. Livein Properties have once again set the benchmark with this project, offering an unmatched living experience that resonates with the allure of a tranquil, opulent lifestyle.

FACILITIES

1. Private Pool
2. Sauna
3. Fireplace place inside / outside
4. VRV Mitsubishi
5. Underfloor heating
6. Photovoltaics
7. Parquet floor
8. Marble Finishes
9. Parking
10. BBQ Area



THE MAGNETIC APPEAL OF LIMASSOL

It comes as no surprise that Limassol boasts clean sandy beaches, excellent water-sport and recreation facilities, award-winning dining and clubbing venues, and fascinating historical and cultural treasures.



The city attracts highly-skilled technical, financial and commercial business professionals – forming a valuable pool of human resources for in-bound companies. These professionals not only work hard, they also play hard – drawn to the city by its extensive range of leisure, entertainment and up-market shopping options.



GETTING AROUND LIMASSOL

Convenience is one of the most compelling aspects to any buyer of a Livein property, so access to the many amenities that Limassol offers is always high of our list of priorities when selecting our locations. The main business hub, the courts, municipal offices, banks, shopping facilities, malls, schools and colleges, Limassol Marina, the seafront Molos, and the highway and transport network are readily accessed from all of our project sites.

FROM THE RESIDENCE

| | | | | | | |
|-----------------------------------|----------------------------|--------------------------|------------------------------------|--------------------|-------------------|---------------------|
| Restaurants, Bars, Cafes 5mins | Banks, & Services 5mins | Local Schools 5-8mins | International Schools 10-15mins | Troodos 40mins | Paphos 35mins | Nicosia 45mins |
| Beach 5mins | Shopping 5mins | Clinics 10-15mins | Spa & Hotels 10mins | Airports 35mins | Larnaca 35mins | Agia Napa 90mins |



Garden & Pool



Garden



Bedrooms



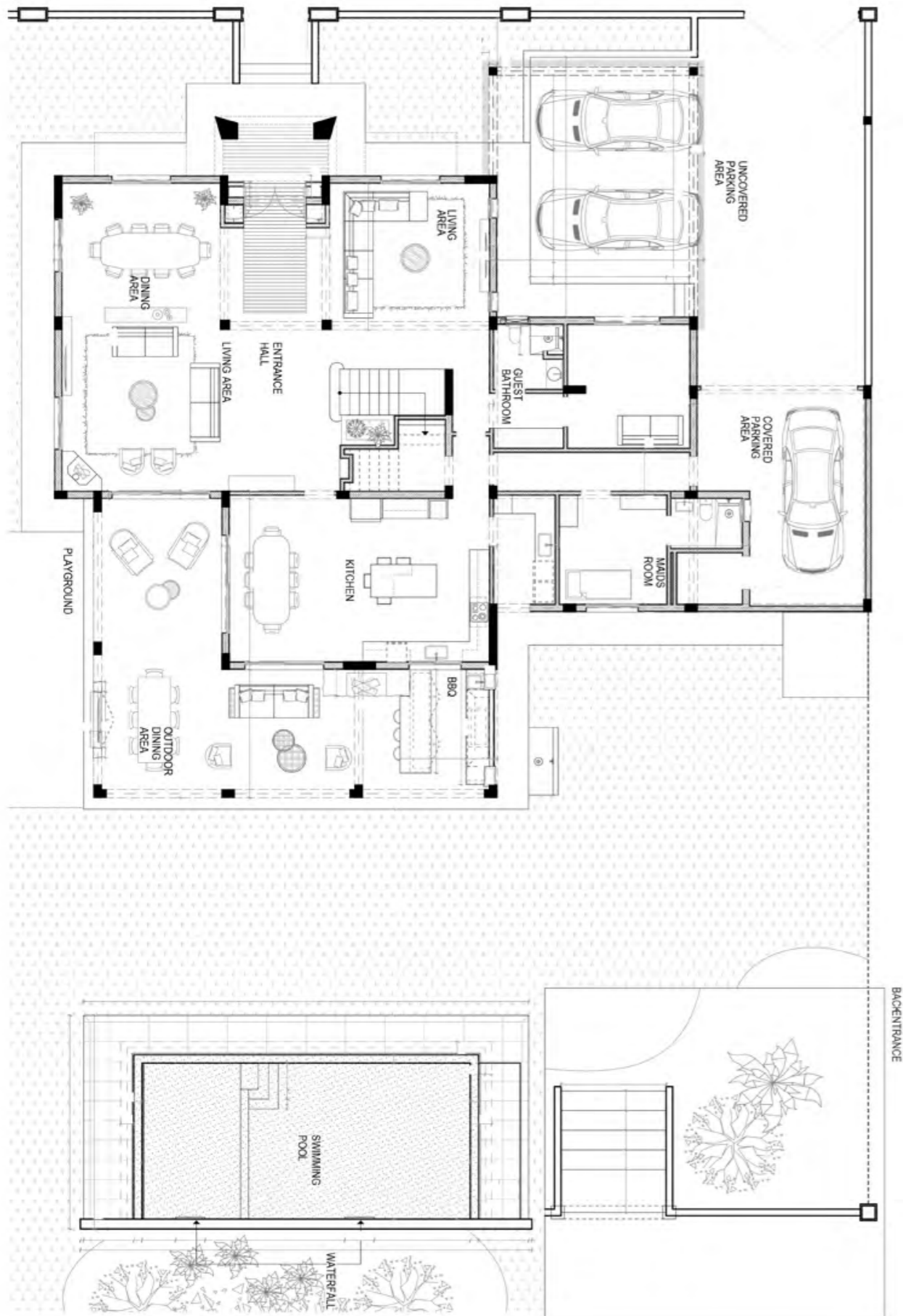
Bathrooms

THE RESIDENCE

Characterised by its leaning towards Cypriot tradition, The Residence embraces all that is modern in the way of construction techniques and premium materials and fittings. The structure houses large bedrooms, bathrooms and balconies on the first floor, while at ground level, the footprint extends from the vast open-plan living spaces and 'heart-of-the-home' kitchen, out onto the colonnaded veranda and outdoor dining area, and onward to the sun terrace and enormous illuminated swimming pool. As would be expected, security and seclusion are integral to the property design.

Entrance





| PLOT (m ²) | Bedrooms | Bathrooms | Living Area (m ²) | Covered Verandas (m ²) | UnCovered Verandas (m ²) | Green Terrace (m ²) |
|------------------------|----------|-----------|-------------------------------|------------------------------------|--------------------------------------|---------------------------------|
| 1487 | 6 | 6 | 640 | 74 | 72 | 60 |



Livein Properties is a fully integrated development and construction company dedicated to creating better homes for people to live, learn, work and play. We focus on the area we know best – Limassol and the south coast of Cyprus – and have over 35 years of combined expertise in property and infrastructure construction, civil engineering and project management.

Our finger is on the pulse of what buyers want, and we continually monitor market trends and implement best practices to enhance building techniques, operations and residents' living experience. Clients rely on our diversified skills and depth of knowledge to maximize asset quality and secure strong investment returns.

All computer generated images included in this brochure are indicative of final specification and are subject to change. Information in this brochure has been prepared solely for the purpose of providing general information about the development and we have taken every care to ensure that the information provided is accurate at the time of its inclusion in this brochure, but do not guarantee the accuracy or completeness and shall not be liable for any loss or damage which may arise from reliance on the information. All illustrations and computer generated images reflect the artists' interpretation of the project and do not take into account the neighbouring buildings, physical structures, streets and landscape. The developers reserve the right to make modifications and changes to any or all architectural and interior features and finishes, brands, colours, materials, building design, specifications, ceiling heights, flooring patterns and floor plans without notification. Actual plans may have minor variations to the typical plans shown in this brochure. All matters will be governed by the applicable purchase and sales agreement. The company retains the copyright of all material in this brochure and may change the content or format at any time.

**8, Georgiou A' Street,
4077 Germasogeia, Limassol-Cyprus**

**Tel: +357 25 320 520,
Fax: +357 25 320 521
info@livein.com.cy,
www.livein.com.cy**



SCAN TO VISIT
PROPERTY ONLINE