

RIVER BANK SUITES

A Residential Project by
www.KINGPROP.co



Minimum efforts, Maximum pleasure.

Riverbank Suites is the club-styled residence building with only 8 apartments that gives a feeling of style and calm.

From panoramic floor-to-ceiling light windows to large verandas that extend living area in warm season - everything is carefully crafted to enjoy comfortable living.

These homes are designed with the best high quality materials with A+ class energy efficiency.

Each penthouse has a private swimming pool with large terrace on the roof in addition to communal swimming pool in the project.

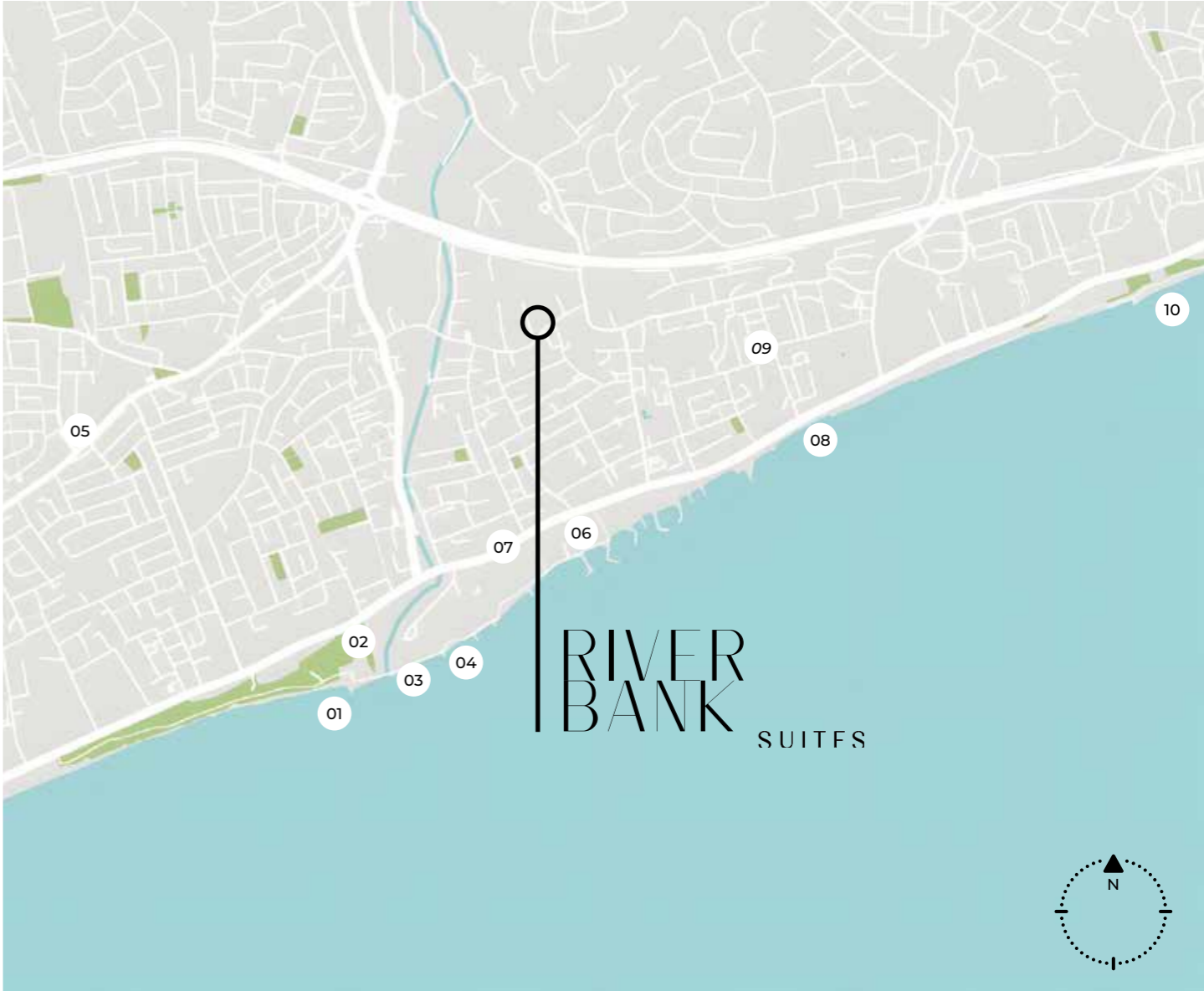
Welcome to Riverbank Suites - perfect blend of sophisticated design and unique technologies.

LOCATION

CYPRUS / LIMASSOL
 POTAMOS GERMASOGEIAS



- ▶ Peaceful and prestigious residential zone in 800 meters from the sea
- ▶ 45 min of driving to Paphos International Airport or Larnaca International Airport.
- ▶ Short distance to all amenities of vibrant enticing city, stunning coastline and thriving business hub.
- ▶ Easy access to highway via Germasogeias roundabout.



- | | |
|-------------------------------|----------------------|
| 01. Blue Flag Beach | 06. Royal Apollonia |
| 02. Olympic Swimming Pool | 07. Restaurants |
| 03. Atlantica Marimare Hotel | 08. Public Beach |
| 04. Water Sports | 09. Skate Park |
| 05. Hyper Market | 10. Blue Flag Beach |



2 br
Apartments &
Penthouses

800m
to the sea

A+
Energy
Efficiency Class

550k €
from

WHAT IS INSIDE?

EACH PROPERTY IS DELIVERED WITH THE TOP STANDARD FINISHES

Ideal Temperature

Underfloor heating and Air-conditioning Systems



Panoramic Windows

Panoramic floor-to-ceiling insulated window with double glazing



Panoramic Windows

Panoramic floor-to-ceiling insulated window with double glazing



Quality Materials

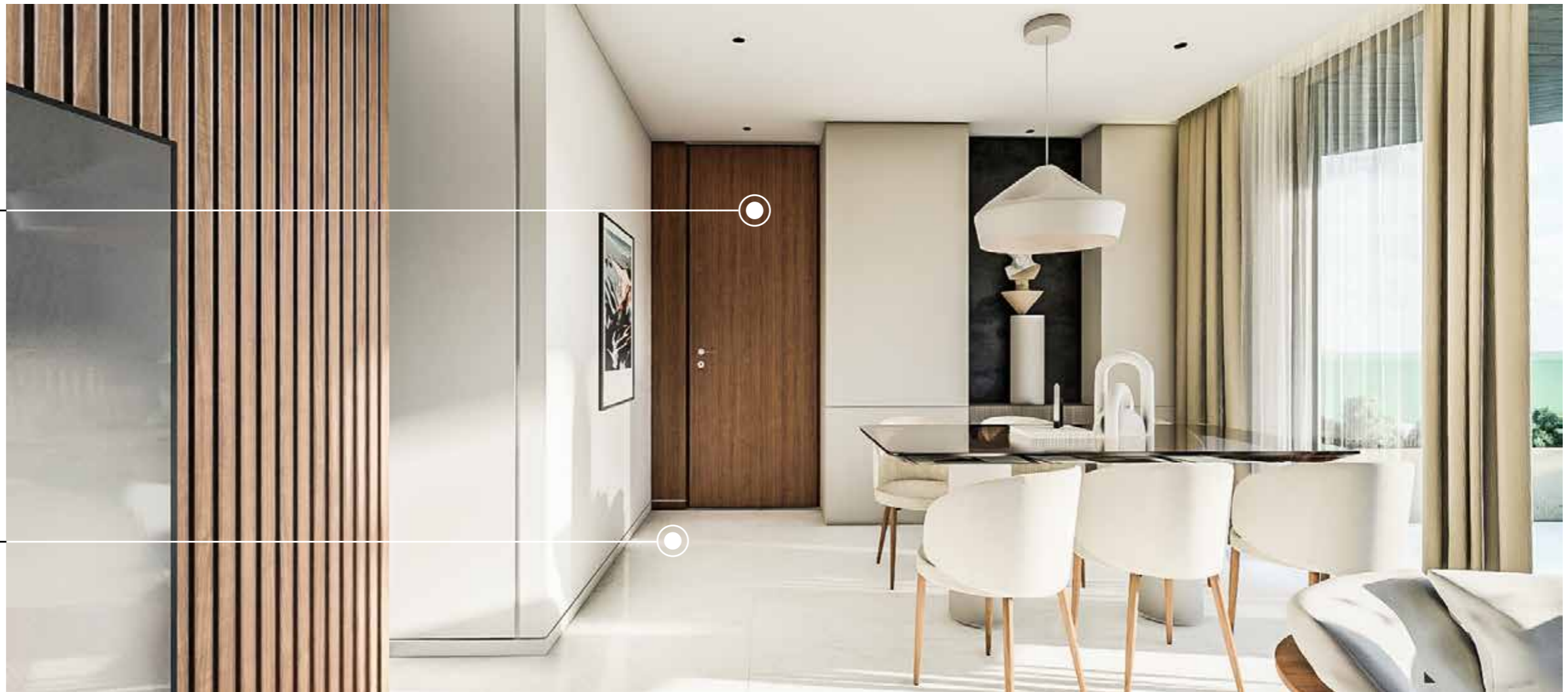
Granite Kitchentop and working area, high standard kitchen cabinets



Great Family Moments

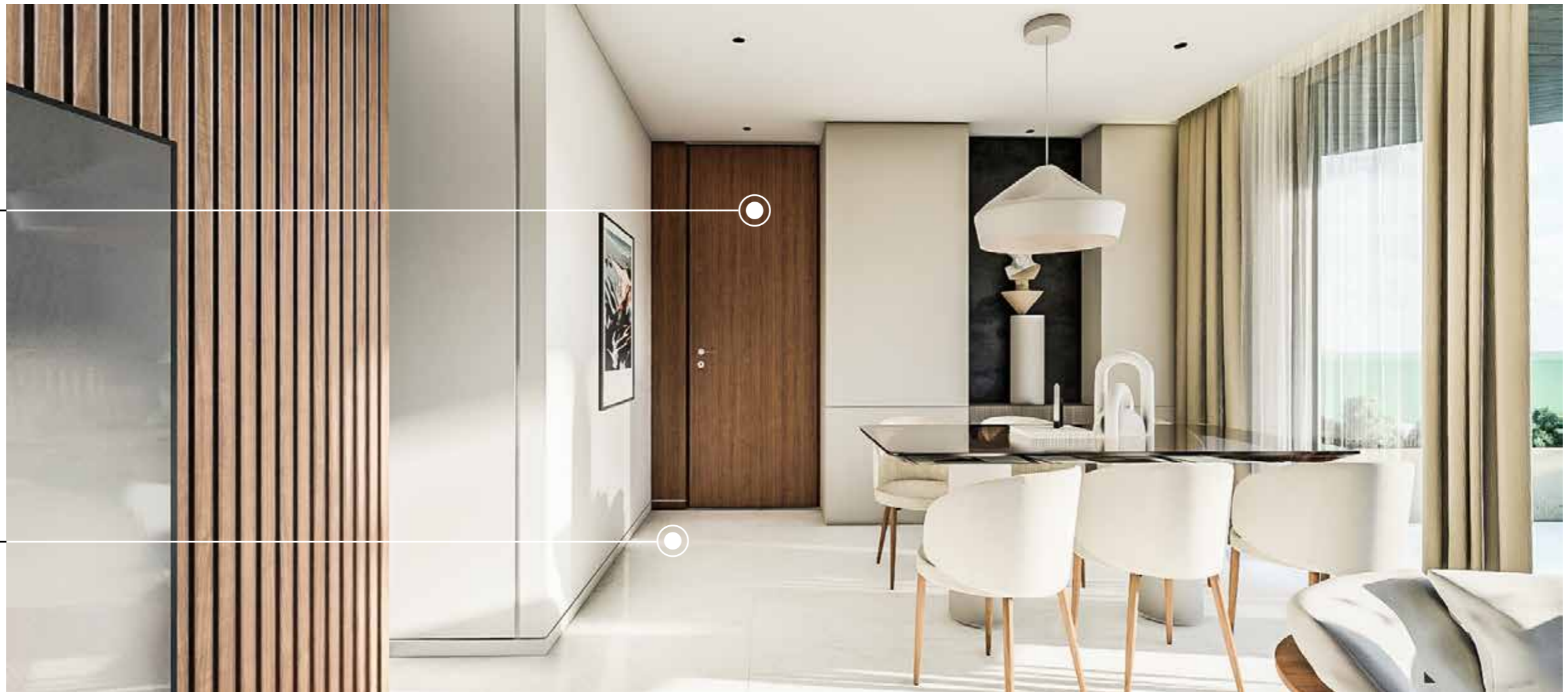
BBQ zone on the veranda

Security Door



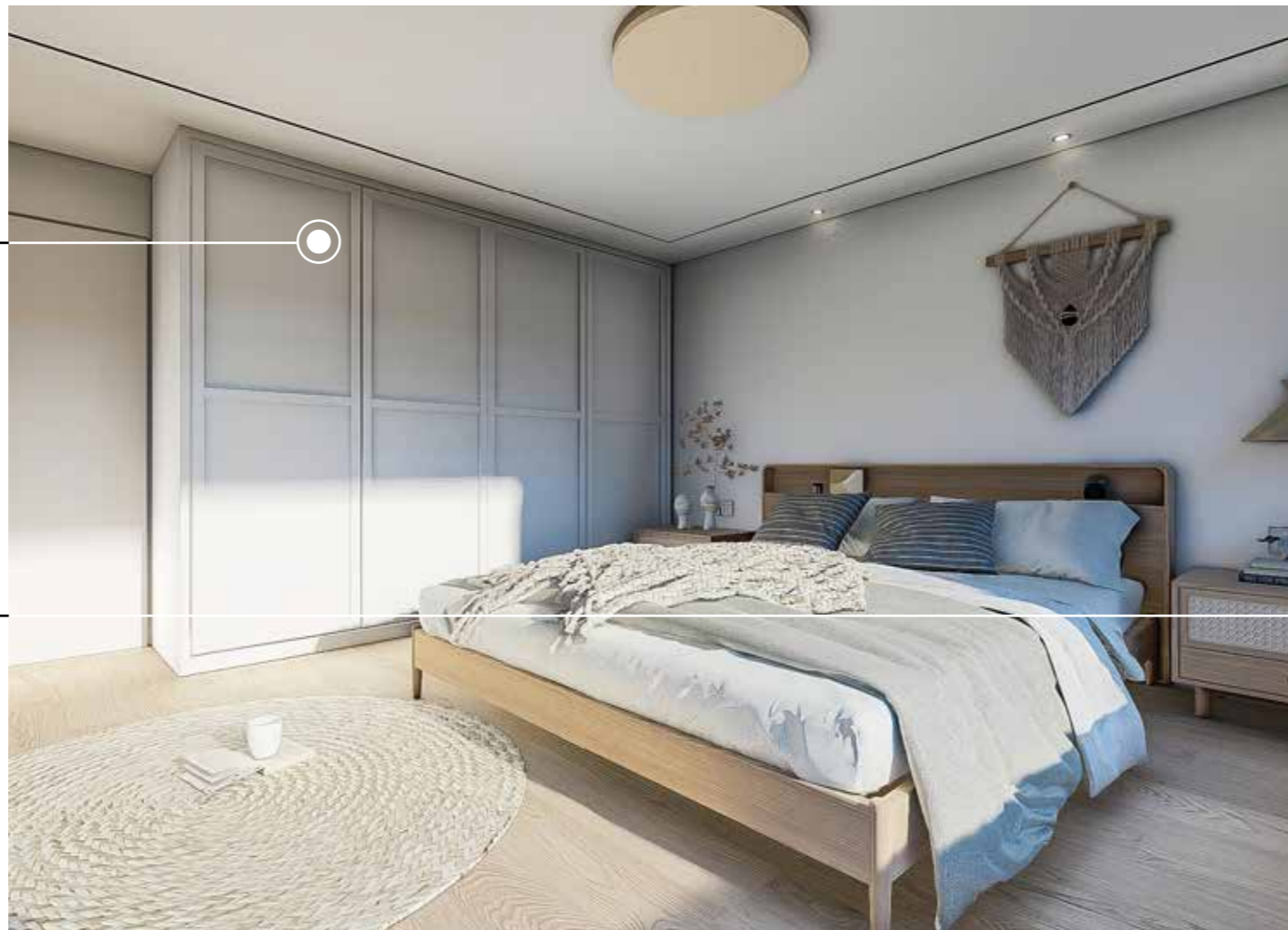
Ideal Temperature

Underfloor heating and
Air-conditioning Systems



For a better Living

High quality doors
and wardrobes



Private Quality

High standard sanitary
ware of EU brands





LIST OF APARTMENTS

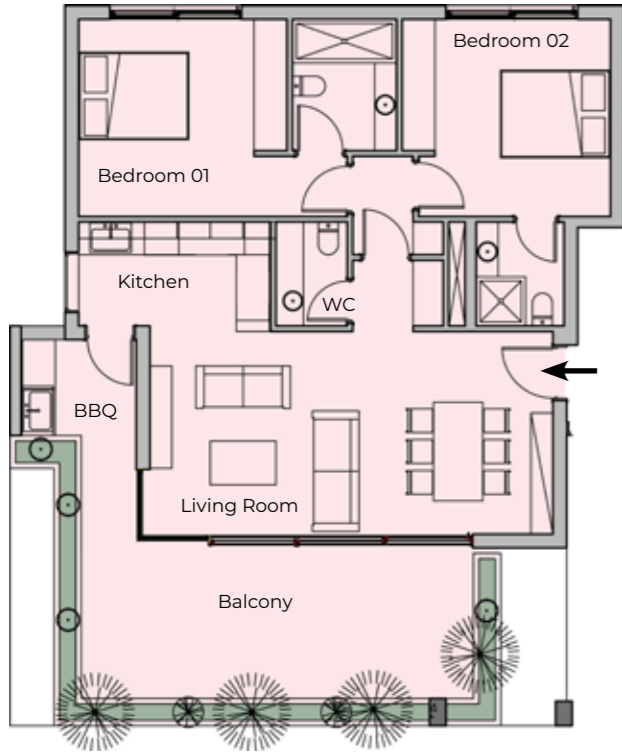
Flat	Floor	Bed	Interior	Exterior	Roof Garden	Swimming Pool	Storage	Parking
101	1	2	88.5	25	-	Communal	YES	1
102	1	2	88.5	25	-	Communal	YES	1
201	2	2	88.5	25	-	Communal	YES	1
202	2	2	88.5	25	-	Communal	YES	1
301	3	2	88.5	25	-	Communal	YES	1
302	3	2	88.5	25	-	Communal	YES	1
401	4	2	88.5	24	55	Private	YES	1
402	4	2	88.5	24	55	Private	YES	1



PLANS

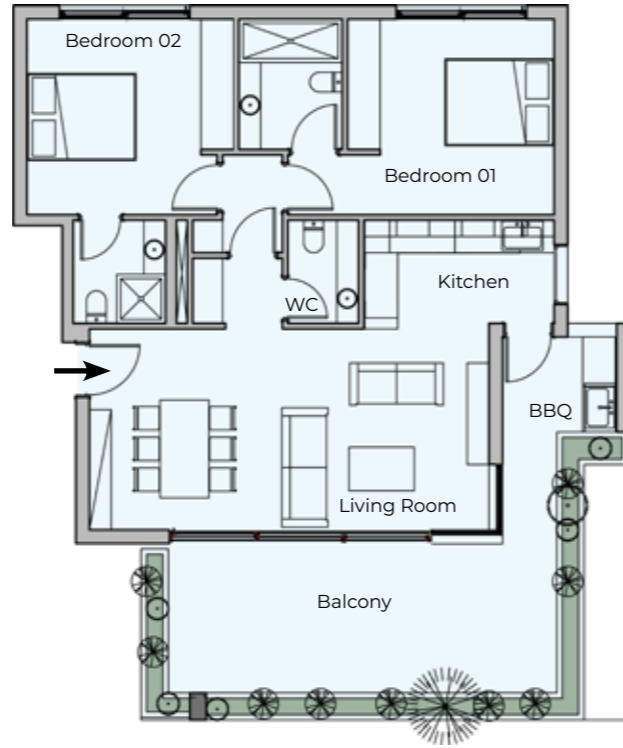
APARTMENT

APARTMENTS
101 - 201 - 301



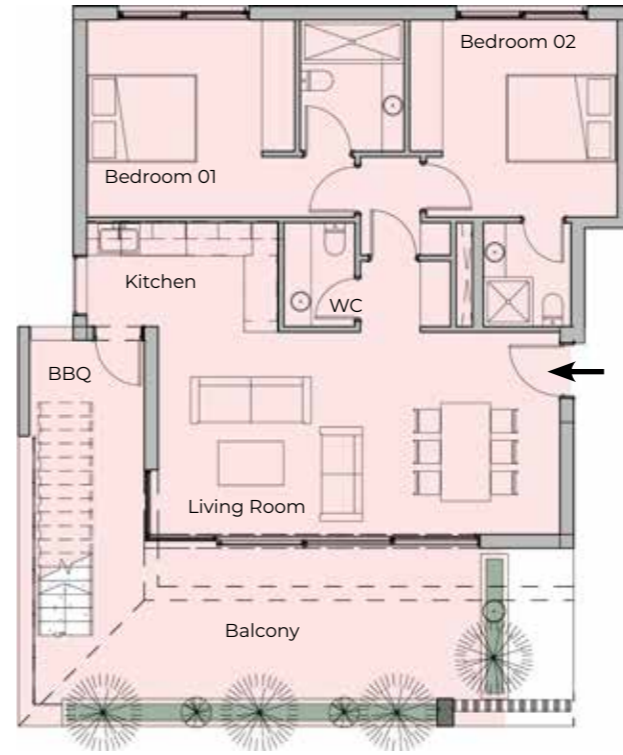
88.5m² Interior
25m² Veranda
2 Beds

APARTMENTS
102 - 202 - 302



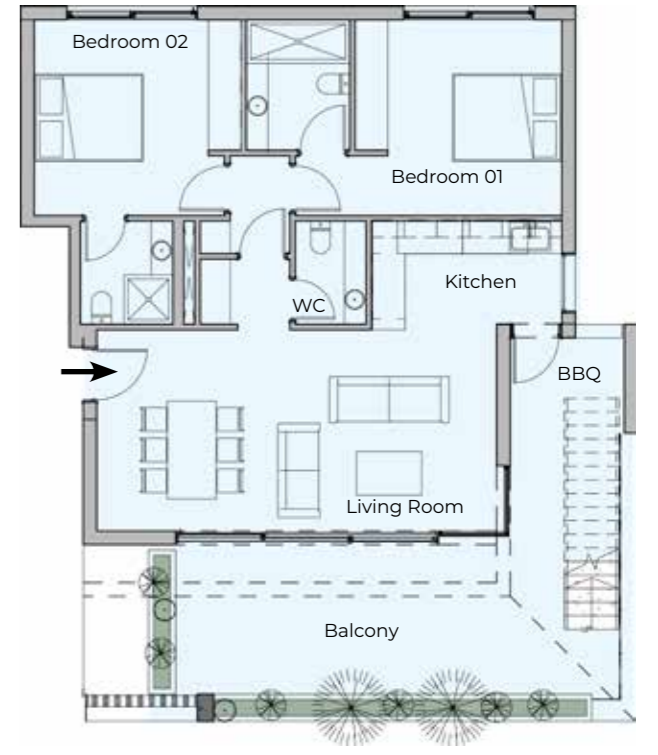
2 Beds
25m² Veranda
88.5m² Interior

APARTMENT
401

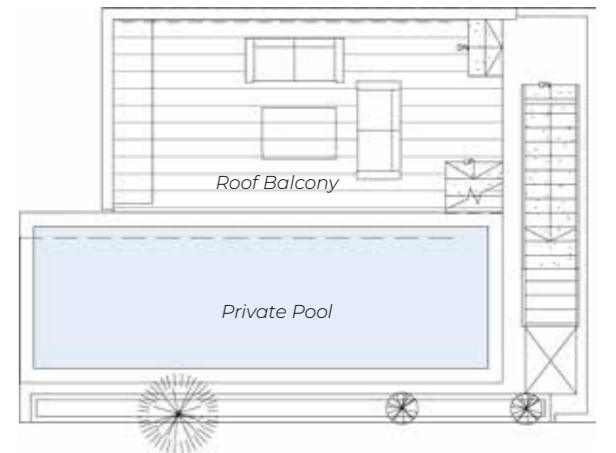
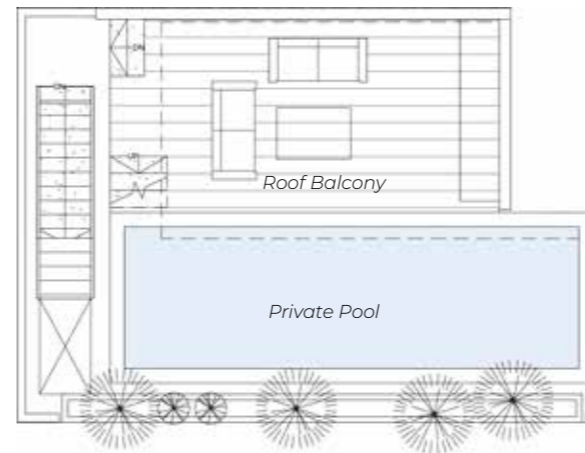


88.5m² Interior
24m² Veranda
2 Beds
55m² Roof Terrace

APARTMENT
402



24m² Veranda
55m² Roof Terrace
88.5m² Interior
2 Beds



The Jewel of the Mediterranean

Basking in year-round sunshine, Limassol effortlessly combines chic coastal living with a rich cultural heritage. From the sparkling shoreline to its vibrant dining and entertainment scene, this cosmopolitan city embodies the ultimate Mediterranean lifestyle—a perfect harmony of modern luxury and timeless island charm.

LIMASSOL



SPECIFICATIONS

GENERAL

- Concrete Building structure frame – Type C30/37
- Thermal bricks: external 25cm, internal 10cm
- Insulation and waterproofing –Thermal insulation, according to the legal requirements. (A study has been issued from the Mechanical Engineer, which is included to the building permit of the project).
- Living Dining Room - Internal areas with high quality EU – made ceramic tiles
- Bedroom – EU-made ceramic tile
- Common area & staircase – Flooring based on Architect's choice
- Veranda - high quality EU – made ceramic tiles
- Roof Garden - high quality EU – made ceramic tiles

EXTERIOR FINISHES

- Modern look of exposed concrete and white paint on the 4 elevations
- HPL panels
- Glass rails on all balconies
- Fairfaced concrete
- Grafiato external walls and ceilings

KITCHEN

- Interior designed fitted kitchens
- Soft cabinet doors, gola system design, laminated MDF
- Kitchens made of quality laminate panels and granite countertops
- Stainless steel sink with polished chrome mixer top
- Internal areas with high quality EU – made ceramic tiles

DOORS & JOINERY FINISHED

- White painted internal doors
- Bespoke built – in bedroom wardrobes

BATHROOMS

- Internal areas with high quality EU – made ceramic tiles
- Sanitary ware and mixers from reputable manufacturers (Grohe or similar)
- Polished chrome framed glass bath and shower screens

ENERGY EFFICIENCY , ELECTRICS

- Energy efficiency of the building – class A+
- Balcony doors with double glazing and thermal insulation - MUSKITA MU3000 Thermal or similar
- White sockets in all locations
- Led downlights in kitchen, living, hallway, bedrooms, bathrooms
- Photovoltaic system reducing the common expenses cost
- TV points in the living room and every bedroom.
- High-speed structured cabling system for audio-visual devices and internet
- TV/internet/telephone sockets in bedrooms, living rooms and verandas
- A/C in Living room & Kitchen & Bedrooms
- Central system for television reception
- Sockets combined with USB ports in bedrooms and kitchen
- Security access key rings and video-intercom system at the main entrance of the building

HEATING - PLUMBING

- Hot water supply is provided with energy – efficient solar panels as well as electric heating, if necessary
- Pipe in pipe system. Pressurized system for hot and cold water is included and quick hot water recirculation system

PARKING AREA - STORAGE

- One for each apartment

SECURITY

- Electric gate access to parking operated with remote control

PROVISIONS

- Provision for electric black-out shutters in all bedrooms
- Networking provisions (Cyta, Cablenet, Primetel)
- Security alarm/fire system for each apartment
- Provisions for washing machine and fridge in each apartment



DEVELOPER

Behind everything we do at KingProp lies a commitment to excellence and an unwavering dedication to integrity. We carefully select locations and properties that meet our high standards of quality and ensure every decision respects the trust of our clients. From land acquisition to development, we meticulously evaluate every aspect to deliver exceptional value. We choose to work only with partners who share our ethos – professionalism, dependability, and a relentless drive for perfection. At KingProp, we don't just build properties; we build relationships founded on trust, quality, and shared success.



By choosing KingProp, you gain access to a network of experts who will support you at every step of your property journey, from development and acquisition to property management tailored to your unique needs.

At KingProp, we don't just build properties; we build relationships founded on trust, quality, and shared success.



- Riverton
- Primeaux
- Nova Residences
- Silver Hills
- Riverbank Suites
- Property Hill
- Everview
- Samiron



DISCLAIMER

Please note that all aspects of the design for Riverbank Suites are subject to ongoing review, and KingProp Ltd reserves the right to make changes to the design, specifications, and features without prior notice. All images and materials provided are for illustrative purposes only.

These particulars are intended solely for the guidance of prospective buyers, tenants, and occupants. They aim to provide a general description of the property and do not constitute an offer, contract, or warranty. Any details, including text, plans, or images, are provided in good faith but should not be relied upon as factual representations.

Nothing in this document should be construed as a guarantee of the property's condition, nor the functionality of any services or facilities. Any measurements, distances, or areas mentioned are approximate and subject to change. Property descriptions are inherently subjective and reflect opinions rather than factual statements.

Neither KingProp Ltd nor any of its representatives have the authority to offer guarantees or warranties regarding the property.



KINGPROP
DEVELOPMENT

+357 25 366 660 | + 357 99 181938 | INFO@KINGPROP.CO

30 GEORGIU A'. STREET, OFFICE G-H
GERMASOGEIA, 4047, LIMASSOL, CY

KINGPROP.CO